

DATA SHEET



Three Phase Induction Motor - Squirrel Cage

Customer :

Product line : W22 NEMA Premium Efficiency Three-Phase Product code : 11572207
 Catalog # : 01018ET3E215TF3-W22

Frame	: 215T	Locked rotor time	: 30s (cold) 17s (hot)
Output	: 10 HP (7.5 kW)	Temperature rise	: 80 K
Poles	: 4	Duty cycle	: Cont.(S1)
Frequency	: 60 Hz	Ambient temperature	: -20°C to +40°C
Rated voltage	: 230/460 V	Altitude	: 1000 m.a.s.l.
Rated current	: 25.3/12.7 A	Protection degree	: IP55
L. R. Amperes	: 162/81.1 A	Cooling method	: IC411 - TEFC
LRC	: 6.4x(Code H)	Mounting	: F-3
No load current	: 11.6/5.80 A	Rotation ¹	: Both (CW and CCW)
Rated speed	: 1765 rpm	Noise level ²	: 58.0 dB(A)
Slip	: 1.94 %	Starting method	: Direct On Line
Rated torque	: 29.8 ft.lb	Approx. weight ³	: 173 lb
Locked rotor torque	: 240 %		
Breakdown torque	: 295 %		
Insulation class	: F		
Service factor	: 1.25		
Moment of inertia (J)	: 1.51 sq.ft.lb		
Design	: B		

Output	50%	75%	100%	Foundation loads
Efficiency (%)	91.0 90.0 89.2 88.7 88.0 90.3 90.3	91.7 90.0 89.9 89.8 88.5 90.2 90.2	91.7 89.8 90.1 90.3 88.5 89.5 90.2	Max. traction : 461 lb
Power Factor	0.65 0.61 0.57 0.53 0.72 0.68 0.64	0.76 0.74 0.70 0.67 0.81 0.79 0.76	0.81 0.81 0.77 0.75 0.85 0.84 0.82	Max. compression : 634 lb

Losses at normative operating points (speed;torque), in percentage of rated output power

Losses (%)	P1 (0,9;1,0)	Drive end				Non drive end			
		8.8	11.0	10.7	10.4	12.6	11.4	10.5	
	P2 (0,5;1,0)	7.3	9.2	8.9	8.7	10.5	9.5	8.8	
	P3 (0,25;1,0)	7.1	8.9	8.6	8.4	10.2	9.2	8.5	
	P4 (0,9;0,5)	4.6	5.7	5.6	5.4	6.6	5.9	5.5	
	P5 (0,5;0,5)	3.2	4.0	3.8	3.8	4.5	4.1	3.8	
	P6 (0,5;0,25)	2.2	2.8	2.7	2.6	3.2	2.9	2.7	
	P7 (0,25;0,25)	1.5	1.9	1.9	1.8	2.2	2.0	1.9	

		<u>Drive end</u>	<u>Non drive end</u>
Bearing type	:	6308 ZZ	6207 ZZ
Sealing	:	V'Ring	V'Ring
Lubrication interval	:	-	-
Lubricant amount	:	-	-
Lubricant type	:	Mobil Polyrex EM	

Rev.	Changes Summary	Performed	Checked	Date
Performed by		Page 1 / 2		Revision
Checked by				
Date	24/02/2025			

DATA SHEET

Three Phase Induction Motor - Squirrel Cage



Customer : _____

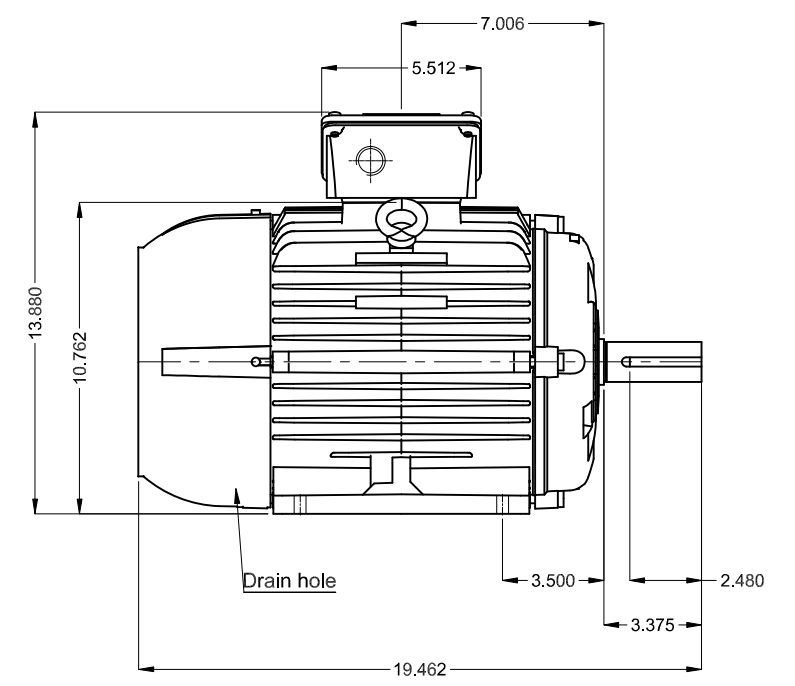
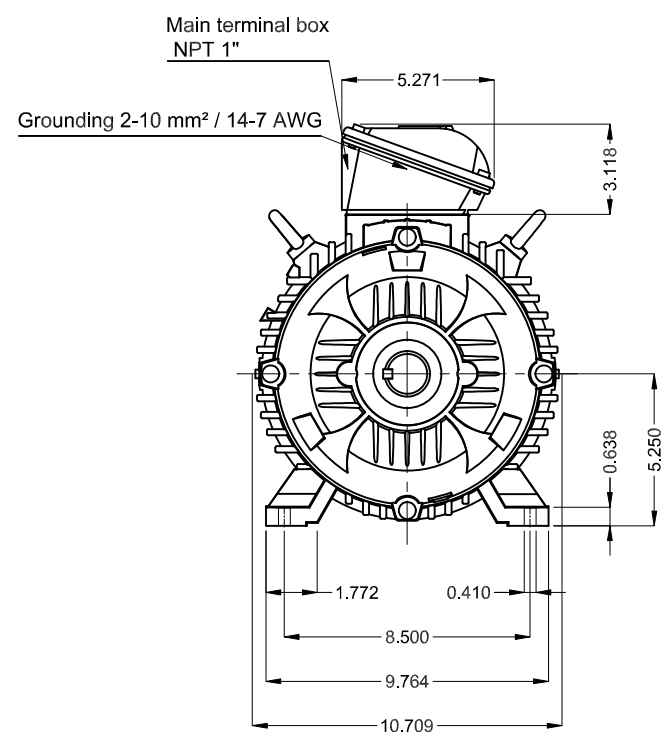
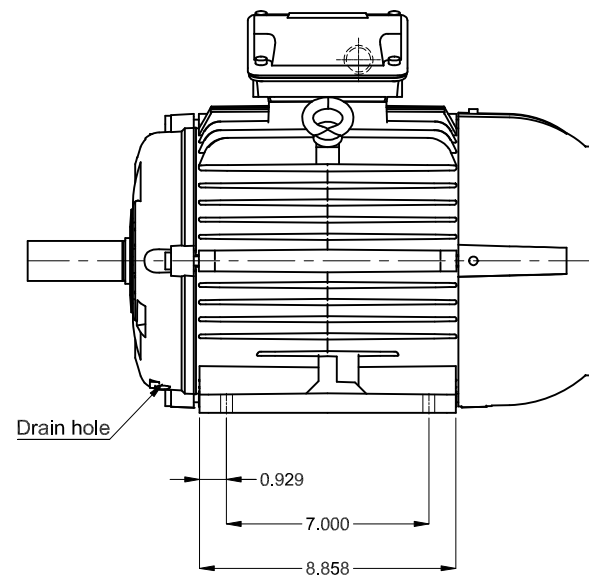
Notes

This revision replaces and cancel the previous one, which must be eliminated.

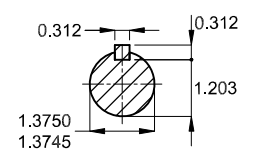
- (1) Looking the motor from the shaft end.
- (2) Measured at 1m and with tolerance of +3dB(A).
- (3) Approximate weight subject to changes after manufacturing process.
- (4) At 100% of full load.

These are average values based on tests with sinusoidal power supply, subject to the tolerances stipulated in NEMA MG-1.

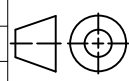
Rev.	Changes Summary	Performed	Checked	Date
Performed by				
Checked by			Page	Revision
Date	24/02/2025		2 / 2	



DE Shaft End



Color RAL 5009
 Painting plan 207A
 Mounting B3T

10 HP 04 Poles 60 Hz										A	
Scale 2 : 13											
								HYBRISUSER		00	
ECM	LOC	SUMMARY OF MODIFICATIONS					EXECUTED	CHECKED	RELEASED	DATE	VER
EXECUTED	HYBRISUSER	 THREE PH. MOTOR W22 NEMA PREM. EFF. FRAME 215T IP55 TEFC					PREVIEW				
CHECKED							WDD		00		
RELEASED							SHEET		1 / 1		
REL. DATE											

